

Ref. : V 1141.pas

Rev. : B

Date : 10/07/07

Page : 1/1

COPPER ALLOY GATE VALVE PN16

V 1141



Tecofi
FAREX FLUID SOLUTION DESIGNER

APPLICATION

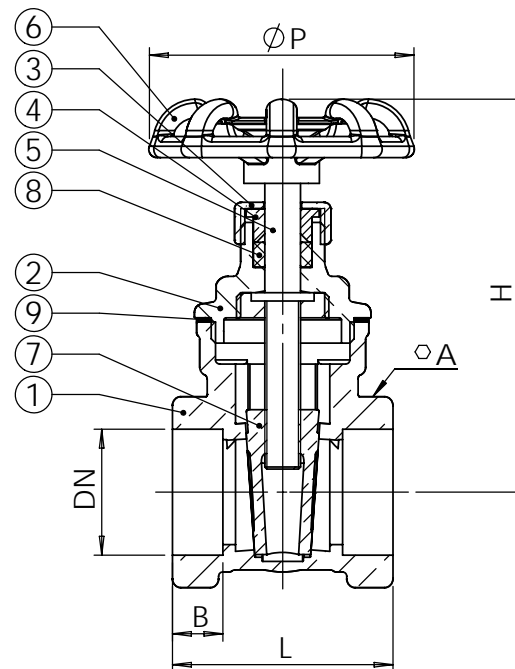
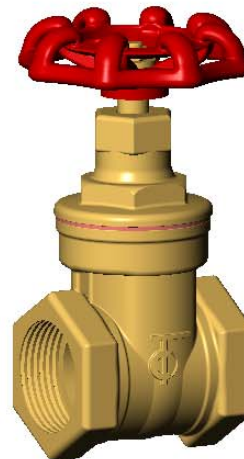
Cutting of a usual fluid, economic installation, cold and hot water, low pressure with control for gas.

GENERAL CHARACTERISTICS

Copper alloy body, bonnet and seat.
Operating by painted steel handwheel.
BSP female threaded ends - PN 16.

CONSTRUCTION

9	1	Bonnet washer	Fiber	
8	1	Stem packing	EPDM	
7	1	Wedge	Copper alloy CuZn39Pb2	DIN: CuZn39Pb2 ASTM: B124 C37700 BS: 12164 CZ121
6	1	Handwheel	Casted aluminium	
5	1	Stem	Copper alloy CuZn39Pb2	DIN: CuZn39Pb2 ASTM: B124 C37700 BS: 12164 CZ121
4	1	Packing gland	Copper alloy	
3	1	Nut	Copper alloy	
2	1	Bonnet	Copper alloy CuZn39Pb2	DIN: CuZn39Pb2 ASTM: B124 C37700 BS: 12164 CZ121
1	1	Body	Copper alloy CuZn39Pb2	DIN: CuZn39Pb2 ASTM: B124 C37700 BS: 12164 CZ121
Pos.	Qty.	Description	Material	



DIMENSIONS

DN		L	H	ØP	A	B	Weight (kg)
mm	inch						
15	1/2"	43.5	72.0	54	26	12.5	0,25
20	3/4"	47	83.0	57	31	12,0	0,32
25	1"	52	90.0	57	37.5	14	0,44
32	1"1/4"	63	100.0	71	47	16	0,73
40	1"1/2"	66	140.0	71	54	16.5	0,98
50	2"	71	144.5	78	65	18	1,43
65	2" 1/2"	82	161.0	129.5	84	20,0	2.40
80	3"	96	193,5	129.5	95	21,5	3.34
100	4"	120	225,0	129.5	122	28,0	5.56

WORKING CONDITIONS

Maximum working pressure : 16 bar.
Maximum temperature : -10°C/+100°C.

Pressure test according to standards
EN 12266-1, DIN 3230, BS 5154 and ISO 5208 :

Body : 24 bar.
Seat : 17,6 bar.

STANDARDS

BSP female threaded according to standard ISO 228-1.

TECOFI France - 83, Rue Marcel Mérieux 69960 Corbas - FRANCE
Tél. +33 (0) 4 72 79 05 79 - Fax +33 (0) 4 78 90 19 19 / +33 (0) 4 72 79 05 70
Adresses e-mail : sales@tecofi.fr ; tecofi@tecofi.fr / Site web : www.tecofi.fr