

Ref. : BS 6179.pas

Rev. : G

Date : 14/01/2014

Page : 1/1

STAINLESS STEEL FULL BORE BALL VALVE PN64

BS 6179



Tecofi 
VALVE DESIGNER - FRANCE

APPLICATION

General uses : All chemical fluid, liquid vapor, gas, etc.

GENERAL CHARACTERISTICS

Stainless steel body and ball - PTFE seat.
BSP threaded ends - Full bore.
Operating by stainless steel lever with locking device - PN 64.

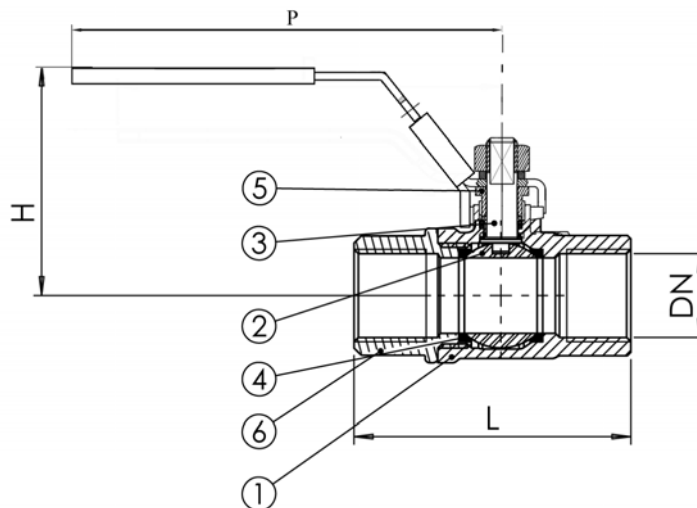
CONSTRUCTION

6	1	Mobil body	Stainless steel 316 GX5CrNiMo 19-11-2	DIN: G-X6CrNiMo18 10 ASTM: A 351 Grade CF8M BS: 1504 316 C16
5	1	Packing flanged	Stainless steel 316 GX5CrNiMo 19-11-2	DIN: G-X6CrNiMo18 10 ASTM: A 351 Grade CF8M BS: 1504 316 C16
4	2	Seat	PTFE filled with 15% glass	
3	1	Stem	Stainless steel 316 X5CrNiMo 17-12-2	DIN: X5CrNiMo18 10 ASTM: A 182 AISI 316 BS: 970 316 S16
2	1	Ball	Stainless steel 316 GX5CrNiMo 19-11-2	DIN: G-X6CrNiMo18 10 ASTM: A 351 Grade CF8M BS: 1504 316 C16
1	1	Body	Stainless steel 316 GX5CrNiMo 19-11-2	DIN: G-X6CrNiMo18 10 ASTM: A 351 Grade CF8M BS: 1504 316 C16
Pos.	Qty.	Description	Material	



DIMENSIONS

DN		L	H	P	Weight (kg)
mm	inch				
8	1/4"	46.8	53	100	0.18
12	3/8"	48.5	53	100	0.19
15	1/2"	58	57	100	0.26
20	3/4"	65.7	66	127	0.40
25	1"	77	70	127	0.59
32	1" 1/4	90	85	154	1
40	1" 1/2	98	89	154	1.32
50	2"	121	103	92	2.46
65	2" 1/2	145	142	244	4.83
80	3"	166	151	244	7.45



WORKING CONDITIONS

Maximum working pressure : 64 bar from DN1/4" to DN3/4"
50 bar from DN1" to DN1"1/4"
40 bar from DN1"1/2 to DN2"
25 bar from DN2"1/2 to DN3".

Maximum working temperature : -30°C / +180°C

Pressure test according to standards
EN 12266-1, DIN 3230, BS 5154 and ISO 5208.
Body : 96 bar
Seat : 70 bar

STANDARDS

BSP threaded according to standard ISO 228-1.

TECOFI France - 83, Rue Marcel Mérieux 69960 Corbas - FRANCE
Tél. +33 (0) 4 72 79 05 79 - Fax +33 (0) 4 78 90 19 19 / +33 (0) 4 72 79 05 70
Adresses e-mail : sales@tecofi.fr ; tecofi@tecofi.fr / Site web : www.tecofi.fr