

Ref. : BS 6379.pas

Rev. : C

Date : 26/09/2011

Page : 1/1

STAINLESS STEEL 3 PIECES FULL BORE BALL VALVE PN64

BS 6379

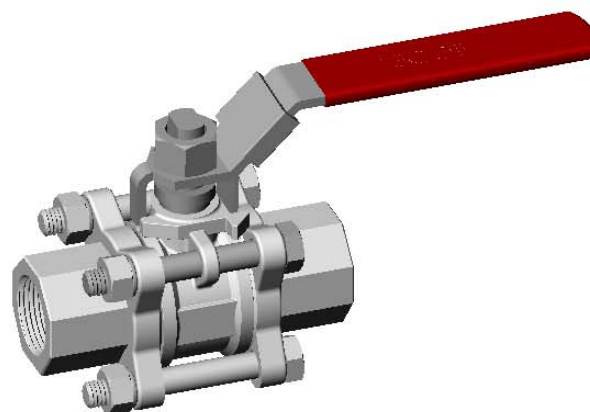


APPLICATION

All chemical fluid, liquid steam, gas, etc.

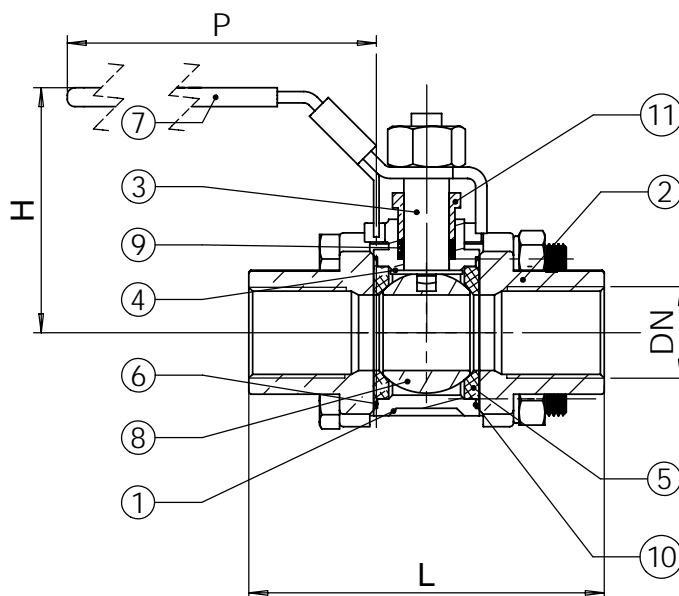
GENERAL CHARACTERISTICS

3 pieces stainless steel body, stem and ball - PTFE seat.
BSP threaded ends or BW-SW - Full bore.
Operating by stainless steel lever with locking devise - PN 64.



CONSTRUCTION

11	1	Nut packing	Stainless steel	
10	1	Body gasket	PTFE	
9	1	Packing	PTFE	
8	1	Ball	Stainless steel 316 GX5CrNiMo 19-11-2	DIN: G-X6CrNiMo18 10 ASTM: A 351 Grade CF8M BS: 1504 316 C16
7	1	Handle	Stainless steel	
6	2	Body gasket	PTFE	
5	2	Seat	PTFE	
4	1	Stem gasket	PTFE	
3	1	Stem	Stainless steel 316 X5CrNiMo 17-12-2	DIN: X5CrNiMo18 10 ASTM: A 182 AISI 316 BS: 970 316 S165
2	2	Ends	Stainless steel 316 GX5CrNiMo 19-11-2	DIN: G-X6CrNiMo18 10 ASTM: A 351 Grade CF8M BS: 1504 316 C16
1	1	Body	Stainless steel 316 GX5CrNiMo 19-11-2	DIN: G-X6CrNiMo18 10 ASTM: A 351 Grade CF8M BS: 1504 316 C16
Pos.	Qty.	Description	Material	



DIMENSIONS

DN		H	P	SW - BSP			BW		
mm	inch			L	S	Weight (kg)	L	T	Weight (kg)
8	1/4"	52	108	59,0	14,1	0,39	59,0	14,0	0,39
12	3/8"	52	108	60,0	17,6	0,41	60,0	17,5	0,41
15	1/2"	63	113	65,5	21,9	0,55	65,5	22,0	0,53
20	3/4"	68	113	76,5	27,4	0,80	76,5	27,5	0,75
25	1"	79	135	86,5	34,2	1,20	86,2	34,0	1,15
32	1" 1/4	88	135	103,1	42,8	1,90	103,1	43,0	1,75
40	1" 1/2	97	160	118,0	48,8	2,35	118,0	49,0	2,45
50	2"	108	160	131,5	61,1	3,90	131,5	61,0	3,80
65	2" 1/2	128	230	164,5	77,0	8,30	174,5	76,5	8,30
80	3"	140	230	182,7	89,9	12,30	192,7	90,4	12,30
100	4"	172	335	229,6	115,4	18,70	239,6	115,0	18,60

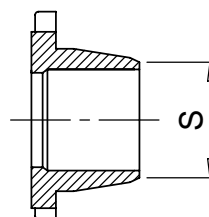
WORKING CONDITIONS

Maximum working pressure : 64 bar
Temperature : + 100°C
Maximum temperature : + 150°C

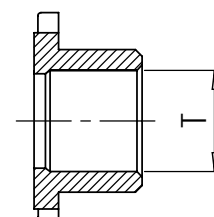
Pressure test according to standards
EN 12266-1, DIN 3230, BS 5154 and ISO 5208 :
Body : 96 bar
Seat : 70 bar

STANDARDS

Ends connections : BSP threaded (ISO 228-1),
butt welding or socket welding.



Socket Welding



Butt Welding