

Ref. : CA 3241.pas

Rev. : C

Date : 10/06/10

Page : 1/1

FLANGED TYPE AXIAL CHECK VALVE

CA 3241



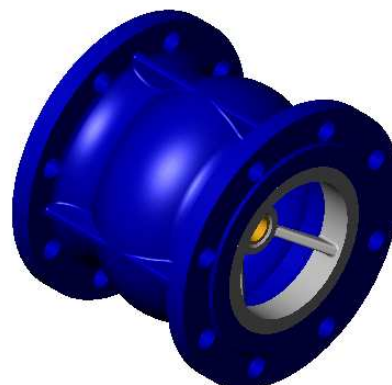
Tecofi
FAREX FLUID SOLUTION DESIGNER

APPLICATION

General uses: pumping, irrigation, industry, clean water.

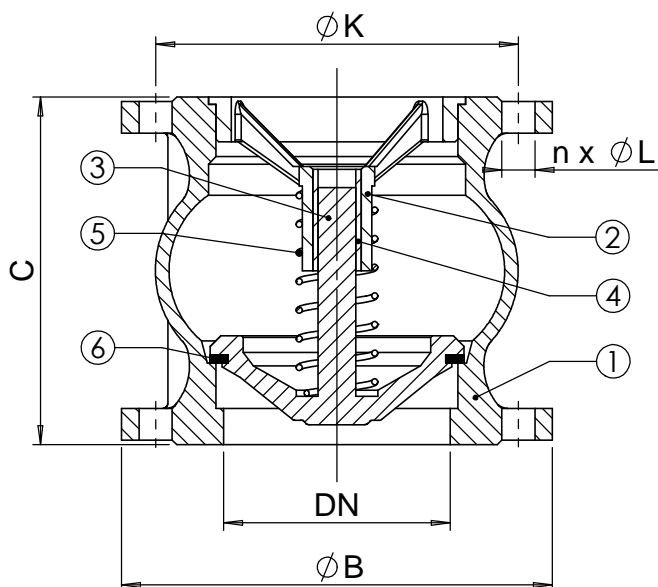
GENERAL CHARACTERISTICS

From DN 50 to DN 300.
Excellent tightness.
Low head loss.
Extremely reliable.
Excellent hydraulic result.
Simplicity in mounting and use.



CONSTRUCTION

6	1	Seal	NBR	
5	1	Spring	Stainless steel	
4	1	Guiding stem	CuZn40Pb2	
3	1	Closing system	Cast iron EN-GJL-250	DIN: GG25 ASTM: A48 class 40B BS: 1452 Grade 250
2	1	Guide	Ductile iron EN-GJS-400-15	DIN: GGG40 ASTM: A536 65-45-12 BS: EN-JS1030
1	1	Body	Cast iron EN-GJL-250	DIN: GG25 ASTM: A48 class 40B BS: 1452 Grade 250
Pos.	Qty.	Description	Material	



DIMENSIONS

DN		C	ØB	ØK	n x ØL	Poids (kg)
mm	inch					
50	2"	100	165	125	4 x 19	5,7
65	2 1/2"	120	185	145	4 x 19	8,7
80	3"	140	200	160	8 x 19	10,8
100	4"	170	220	180	8 x 19	13,5
125	5"	200	250	210	8 x 19	21
150	6"	230	285	240	8 x 23	30
200	8"	300	340	295	12 x 23	49
250	10"	370	405	355	12 x 28	73,3
300	12"	410	460	410	12 x 28	112

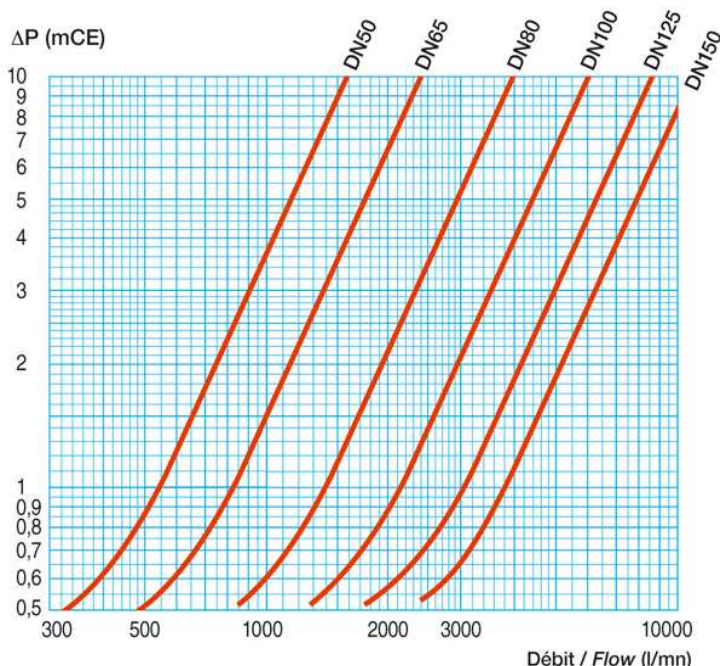
WORKING CONDITIONS

Maximum working pressure : 16 bar.
Maximum temperature : +100°C.

Pressure test according to standards
EN 12266-1, DIN 3230, BS 6755 and ISO 5208 :
Body : 24 bar.
Seat : 17,6 bar.

STANDARDS

Flanges drilled according to EN 1092-2 and
DIN 2501/1 : ISO PN16. ASA 150 on request.



mCE : mètre colonne d'eau / meter water column

TECOFI France - 83, Rue Marcel Mérieux 69960 Corbas - FRANCE
Tél. +33 (0) 4 72 79 05 79 - Fax +33 (0) 4 78 90 19 19 / +33 (0) 4 72 79 05 70
Adresses e-mail : sales@tecofi.fr ; tecofi@tecofi.fr / Site web : www.tecofi.fr