

Ref. : DI 7251.pas

Rev. : Initial

Date : 31/01/2012

Page : 1/1

RUBBER EXPANSION JOINT WITH SWIVEL FLANGES

DI 7251



Tecofi'
FAREX FLUID SOLUTION DESIGNER

APPLICATION

General use : connecting pipes

GENERAL CHARACTERISTICS

- From DN 20 to DN 300
- Angular movement in accordance with DN
- Swivel Flanges
- Galvanized carbon steel flanges PN 25

WORKING CONDITIONS

Maximum working Pressure and Temperature:

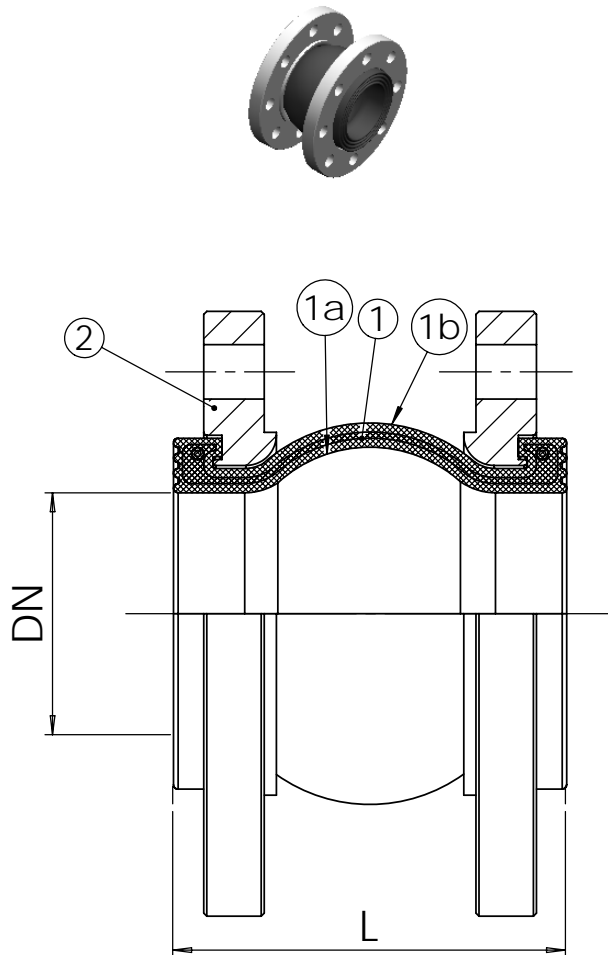
- 25 bar (+60 °C)
- 16 bar (+90 °C)
- 10 bar (100 °C)

AGREEMENT AND STANDARDS

Flanges drilled according to DIN 2501 and EN 1092-1 : ISO PN25

CONSTRUCTION

2	2	Flange	Galvanized steel
1b	1	Cover	EPDM
1a	1	Tube	EPDM - Nitril
1	1	Bellow	Rubber
Pos.	Qty.	Description	Material



DIMENSIONS

DN		L	Lc	Le	Li	A°	Weight (kg)
mm	inch						
20	3/4"	100	20	10	10	25	2.4
25	1"	100	20	10	10	25	2.4
32	1"1/4	125	35	10	15	25	4.3
40	1"1/2	125	35	10	15	25	4.3
50	2"	125	35	10	15	21.8	4.5
65	2"1/2	125	35	10	15	17.1	4.8
80	3"	150	35	10	15	14.0	5.7
100	4"	150	35	10	15	11.3	8.8
125	5"	150	35	10	15	9.1	11.3
150	6"	150	35	10	15	7.6	12.0
200	8"	175	45	15	15	8.5	20.5
250	10"	175	45	15	15	6.8	26.2
300	12"	200	45	15	15	5.7	35.0

Lc : axial compression
Le : axial extension
Li : lateral movement

