

Ref. : MUT2200ELPN25

Rev. : Initial

Date : 14/04/2015

Page : 1/1

PN25 FLANGED TYPE SENSORS

MUT2200ELPN25



APPLICATION

These sensors are typically used in the measure of potable or recycled water, industrial waste water, industrial process liquids, mud and concretes.

GENERAL CHARACTERISTICS

Range from DN15 to DN400.
 Separate version: the sensor is connected to the converter by means of a cable (maximum length 100 meters). Standard electrodes in hastelloy C.
 Measurement range of more than 1:1000 without linearization software.
 Accurate measures on a wide flow rate range and a lower flow rates.
 Carbon steel flange and sensor with acrylic painted external surface.
 (Flange and sensor in stainless steel 304 or 316 on request)
 Excellent resistance to water immersion (**degree of protection IP68**).
 PTFE internal lining material on standard from DN15 to DN100 and over by request.



DIMENSIONS

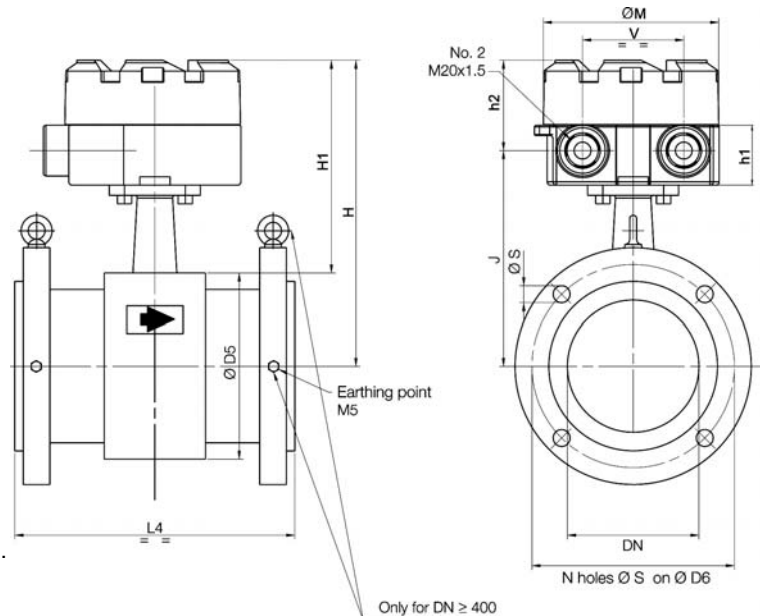
DN		ØD5	L4	J	ØD6	N	ØS	H	H1	h1	h2	ØM	V
mm	inch												
15	1/2"	84	200	114.5	65	4	14	168	126	35.5	53.5	104	60
20	3/4"	84	200	114.5	75	4	14	168	126	35.5	53.5	104	60
25	1"	64	200	104.5	85	4	14	158	126	35.5	53.5	104	60
32	1 1/4"	77	200	111	100	4	18	164.5	126	35.5	53.5	104	60
40	1 1/2"	82	200	113.5	110	4	18	167	126	35.5	53.5	104	60
50	2"	98	200	121.5	125	4	18	175	126	35.5	53.5	104	60
65	2 1/2"	114	200	129.5	145	8	18	183	126	35.5	53.5	104	60
80	3"	127	200	136	160	8	18	189.5	126	35.5	53.5	104	60
100	4"	152	250	148.5	190	8	22	202	126	35.5	53.5	104	60
125	5"	178	250	161.5	220	8	25	215	126	35.5	53.5	104	60
150	6"	206	300	175.5	250	8	25	229	126	35.5	53.5	104	60
200	8"	257	350	201	310	12	25	254.5	126	35.5	53.5	104	60
250	10"	311	450	228	370	12	30	281.5	126	35.5	53.5	104	60
300	12"	362	500	253.5	430	16	30	307	126	35.5	53.5	104	60
350	14"	394	550	269.5	490	16	33	323	126	35.5	53.5	104	60
400	16"	444	600	294.5	550	16	36	348	126	35.5	53.5	104	60

WORKING CONDITIONS

Working pressure : 25 bar.
 Maximum temperature : (depends of internal lining material)
 with PTFE: -40°C / + 130°C
 with Ebonite for food -40°C / +80°C

STANDARDS

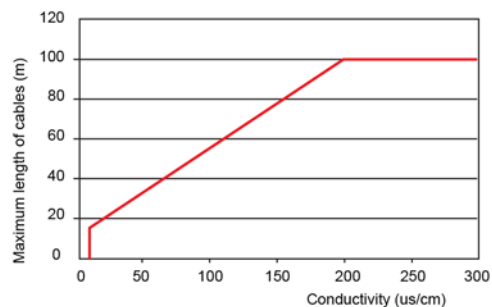
Flanged connection ISO PN 25 according to EN 1092-1, ISO 7005-1.



Flowrate Table (Blue values are preferable)

DN		VELOCITY (m/s)			
mm	inch	0,05	0,5	4	10
15	1/2"	-	-	-	-
20	3/4"	-	-	-	-
25	1"	88,36 l/h	883,57 l/h	8.835,73 l/h	17.671,46 l/h
32	1 1/4"	0,14 m3/h	1,45 m3/h	14,48 m3/h	28,95 m3/h
40	1 1/2"	0,23 m3/h	2,26 m3/h	22,62 m3/h	45,24 m3/h
50	2"	0,35 m3/h	3,53 m3/h	35,34 m3/h	70,69 m3/h
65	2 1/2"	0,6 m3/h	5,97 m3/h	59,73 m3/h	119,46 m3/h
80	3"	0,9 m3/h	9,05 m3/h	90,48 m3/h	180,96 m3/h
100	4"	1,41 m3/h	14,14 m3/h	141,37 m3/h	282,74 m3/h
125	5"	2,21 m3/h	22,09 m3/h	220,89 m3/h	441,79 m3/h
150	6"	3,18 m3/h	31,81 m3/h	318,09 m3/h	636,17 m3/h
200	8"	5,65 m3/h	56,55 m3/h	565,49 m3/h	1.130,97 m3/h
250	10"	8,84 m3/h	88,36 m3/h	883,57 m3/h	1.767,15 m3/h
300	12"	12,72 m3/h	127,23 m3/h	1.272,35 m3/h	2.544,69 m3/h
350	14"	17,32 m3/h	173,18 m3/h	1.731,80 m3/h	3.463,61 m3/h
400	16"	22,62 m3/h	226,19 m3/h	2.261,95 m3/h	4.523,89 m3/h

Maximum length of cables according to the liquid conductivity



TECOFI France - 83, Rue Marcel Mérieux 69960 Corbas - FRANCE
 Tél. +33 (0) 4 72 79 05 79 - Fax +33 (0) 4 78 90 19 19 / +33 (0) 4 72 79 05 70
 Adresses e-mail : sales@tecofi.fr ; tecofi@tecofi.fr / Site web : www.tecofi.fr

The photographs and technical art works are not contractual. The specifications of the presented products are open to modifications without previous advice.